



GEZONDE KAS
 > GESUNDES GEWÄCHSHAUS <



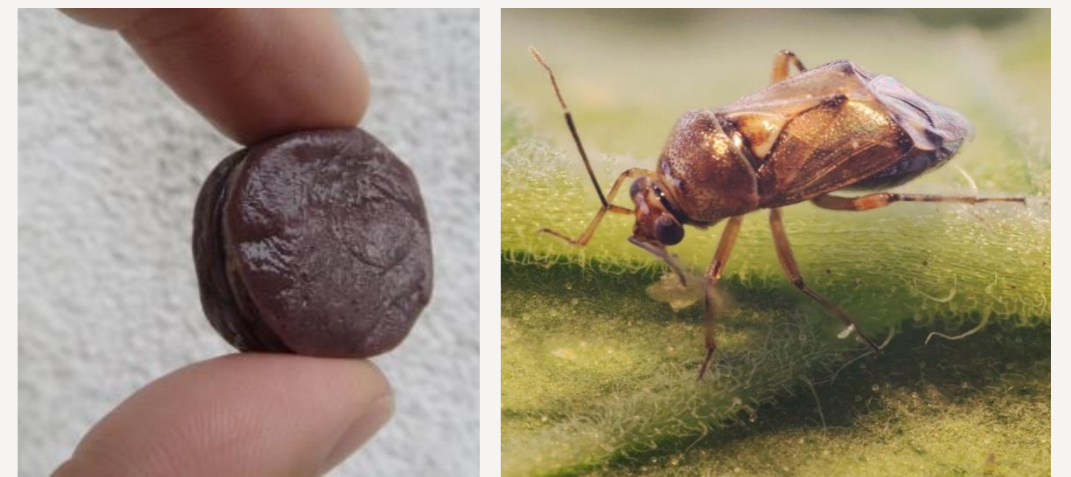
STEP MEASURES

During the step Measures, preferentially biological or other alternative crop protection measures will be used. In case chemical agents need to be applied after all, this can be done using a crop adapted spraying (CAS) system. With this new spraying technique a minimal dose is applied. The emission to the environment is reduced, no pesticides are applied on spots where it is not needed. In combination with the previously mentioned CF-camera, precision spraying can be applied: only (suspected) diseased parts of the plant will be sprayed.

After measures have been applied the process of the Gezonde Kas system starts again from the beginning with the step Monitoring.

BIOLOGICAL CONTROL PREDATORS AND ENDOPHYTES

A combination with increased value because of the interaction!



CROP ADAPTED SPRAYING IN TOMATO:



PRECISION SPRAY SYSTEM ON SIDE CROP VIEWER WITH CF CAMERA FOR TOMATO



AND IN CYCLAMEN:



CONTACT
Dr. Carolien Zijlstra
 Wageningen UR
 Postbus 69
 6700AB Wageningen
 T +31.317480635
 E carolien.zijlstra@wur.nl
 / www.gezondekas.eu

